

A publication for sportsmen dedicated to the enjoyment, preservation, and improvement of salmon and trout fishing in the Great Lakes.



# The Tightline

GREAT LAKES SPORT FISHERMEN FOUNDATION

MILWAUKEE, WISCONSIN

January 2024

ISSUE 542

**BOARD APPROVES  
\$20 ANNUAL  
DUES FOR ALL  
MEMBERS AND  
THEIR IMMEDIATE  
FAMILY MEMBERS!  
EFFECTIVE  
12-12-2023**



**Mark Your Calendar!  
Saturday,  
August 3rd, 2024**

**South Shore Park Boat Launch  
Survey**



**Your feedback is requested!**

Over the next few months (or year), we hope to work with the Milwaukee County Parks to improve South Shore Park boat launch and fishing cleaning station. As part of this, we are asking for your input. Please use this QR code or link to leave your feedback. <https://forms.office.com/r/qZGy5chJWE>

*All Meetings are the  
second Tuesday of the Month.  
**New Berlin Ale House**  
16000 W. Cleveland Ave,  
New Berlin*

**Membership Meeting  
Next Event: Tuesday,  
January 9th  
Past, Present, and Future of  
Invasive Carps in the Great  
Lakes - Titus Seilheimer, Ph.D.  
Fisheries Specialist  
Wisconsin Sea Grant  
All followed by one of  
Dave Bowe's raffles!  
at New Berlin Ale House**

**Club Events  
Page 3**

**Membership Dues  
Page 6**

More Club News  
[www.GLSFCLUB.com](http://www.GLSFCLUB.com)

**Upcoming Meetings**  
February 13th ❤️  
March 12th 🍀  
March 30th - Seminar  
April 9th - Swap  
May 14th 🌸

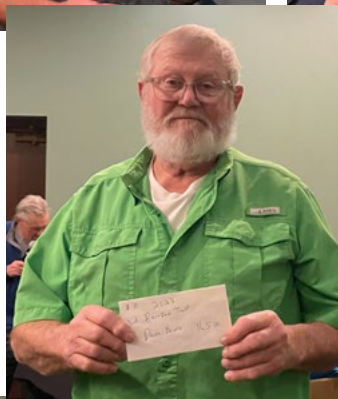
**GLSF FREE SEMINAR  
on Saturday, March 30th, 2024**

*See details on page 7!*

**New Berlin Ale House  
from 9 am to 4 pm**

**Bucket Raffles, Fishing Gear  
and Limited Services on Site!  
Advanced Registration Required**

The GLSF 2023 Christmas and Awards Banquet was held on Tuesday, December 12th. We had 42 persons in attendance, enjoying each others' company, along with some good food and drink. We handed out the Awards for our 4 Summer Fish Ins, and the Awards for the Ongoing GLSF Fishing Contest which concluded on October for 2023. Fisherman of the Year was won by Andy Korducki and Captain's Catch was won by Jerry Kozar. Congratulation to all the winners! Thank you to everyone who paid and attended the Banquet to honor all the great catches registered by our fellow members.



## BOARD OF DIRECTORS

Please contact any of the directors regarding any information or issues of the coordinating activities.

### President

**Brian Haydin**

[brian@glsfclub.com](mailto:brian@glsfclub.com)

### Vice-President

**Bob Wincek**

[bob@glsfclub.com](mailto:bob@glsfclub.com)

### Treasurer

**Ron Mickinak**

[ron@glsfclub.com](mailto:ron@glsfclub.com)

### Secretary

**Ryan Flohr**

[ryan@glsfclub.com](mailto:ryan@glsfclub.com)

## DIRECTORS

**Jim Hirt**

[jimh@glsfclub.com](mailto:jimh@glsfclub.com)

**Bob Krecak**

[bobk@glsfclub.com](mailto:bobk@glsfclub.com)

**Dan Luling**

[dan@glsfclub.com](mailto:dan@glsfclub.com)

**Pete Papageorge**

[pete@glsfclub.com](mailto:pete@glsfclub.com)

**Bryan VanLaarhoven**

[bryan@glsfclub.com](mailto:bryan@glsfclub.com)

**Tightline Newsletter Editor –**

**Joelle Curro**

[joelle.curro@glsfclub.com](mailto:joelle.curro@glsfclub.com)

All articles published are ideas and thoughts of the writer and don't necessarily reflect the ideas or beliefs of the GLSF Club or Foundation.





The newly appointer DNR secretary, Adam Payne, tendered his resignation as of November 1, 2023. We await the nomination of a new DNR Secretary from the Governor. Additionally, 4 of the recently appointed NRB representatives were not confirmed by the Legislature. As a result, the Governor appointed 4 more nominees just prior to last Wednesday's NRB Meeting. Interesting times indeed!

**Bob Wincek is one of the Waukesha County Conservation Congress Representatives and is Vice-Chair of the Great Lakes Advisory Committee. Brian Haydin is one of the Milwaukee County Conservation Congress Representatives. Both are the Chairpersons for their County and a member of the Bear Committee.**

How many members are aware that there is a Youth component to the Wisconsin Conservation Congress called the Youth Conservation Congress? Their Charter is the same as the WCC and their members are mentored by members of the WCC. To learn more, click the link below and read their newsletter. You might be amazed!

[https://dnr.wisconsin.gov/sites/default/files/topic/About/WCC/YCC/2023\\_December\\_Newsletter.pdf](https://dnr.wisconsin.gov/sites/default/files/topic/About/WCC/YCC/2023_December_Newsletter.pdf)

## YCC Delegates in Action



Gabby, YCC delegate from Jefferson Co. caught these two bass in the Crawfish River, Dodge County.



Tommy, YCC delegate from Vilas County squeezed in a day of late fall fishing before freeze up.



## CALENDAR CORNER

[www.glsfclub.com](http://www.glsfclub.com)

Membership Meetings are normally held at the **New Berlin Ale House** – And Open to the Public 16000 W. Cleveland Avenue, New Berlin at 7pm

### January 2024

**9 - GLSF Board Meeting –**

New Berlin Ale House, 5:30pm

**9 - GLSF Membership Meeting –**

New Berlin Ale House, 7pm, Program: **Past, Present, and Future of Invasive Carps in the Great Lakes** by Titus Seilheimer, Ph.D., Fisheries Specialist from Wisconsin Sea Grant

### February 2024

**9- GLSF Board Meeting –**

New Berlin Ale House, 5:30pm

**9 - GLSF Membership Meeting –**

New Berlin Ale House, 7pm, Program: TBD

**17 - Ice Fishing Clinic –**

Greenfield Park, 8am to 3pm

### March 2024

**5 - GLSF Board Meeting –**

New Berlin Ale House, 6pm

**6-10 - Milwaukee Sports Show –**

State Fair Park

**12 - GLSF Membership Meeting –**

New Berlin Ale House, 7pm, Program: TBD

**30 - 4th Annual FREE GLSF Sponsored**

**Salmon School –** New Berlin Ale House, 9am to 3:30pm

### April 2024

**2- GLSF Board Meeting –**

New Berlin Ale House, 6pm

**9 - Members' Swap Meet –**

New Berlin Ale House, 4pm

**9 - GLSF Membership Meeting –**

New Berlin Ale House, 7pm, Program: TBD

**13 -Spring Fishing Clinic –**

Greenfield Park, 8am to 3pm

# FGLSF Fishing Contest 2023 Final Standings

## Adult Division

### Brown Trout over 6 lb

1st	Andy Korducki	22.12 lbs
2nd	Brandon Witt	18.64 lbs
3rd	Steve Lipski	17.8 lbs

### Lake Trout over 10 lb

1st	Andy Korducki	22.0 lbs
2nd	Ray Korducki	17.5 lbs
3rd	Dave Bowe	15.6 lbs

### Rainbow Trout over 8 lb

1st	Ryan Flohr	13.22 lbs
2nd	Robert Kracek	12.0 lbs
3rd	Dave Bowe	11.5 lbs

### Coho Salmon over 7 lb

1st	Dominic Federighe	11.02 lbs
2nd	Andy Korducki	9.0 lbs
3rd	Christine Droukas	7.8 lbs

### King Salmon over 19 lb

1st	Kevin Kaari	27.3 lbs
2nd	Oscar Reyna	25.8 lbs
3rd	Matt Lubecke	25.6 lbs

## Junior Division

### Brown Trout over 3 lb

1st	Kaylee Witt	14.4 bs
2nd	—	
3rd	—	

### Lake Trout over 5 lb

1st	Jacob Federighe	20.55 lbs
2nd	Quintin Witt	16.1 lbs
3rd	Elaina Lubecke	15.7 lbs

### Rainbow Trout over 5 lb

1st	Ethan Flohr	10.9 lbs
2nd	Chase Lubecke	9.8 lbs
3rd	Quintin Witt	8.18 lbs

### Coho Salmon over 5 lb

1st	Ethan Flohr	8.24 lbs
2nd	—	
3rd	—	

### King Salmon over 12 lb

1st	Kamm Reyna	20.5 lbs
2nd	Nicholas Kaari	18.7 lbs
3rd	Ethan Flohr	18.32 lbs

## Fish of the Month/Biggest Fish of the Month

April	FOTM (Brown Trout)	Steve Todd – 12.9 lbs
	Biggest Fish	None Caught
May	FOTM (Brown Trout)	None Caught
	Biggest Fish, Chinook	Dave Bowe – 21.0 lbs
June	FOTM (Coho)	Christine Droukas – 7.8 lbs
	Biggest Fish, Chinook	Oscar Reyna – 25.87 l
July	FOTM (Rainbow)	Ryan Flohr – 13.22 lbs
	Biggest Fish, Chinook	Kevin Kaari – 27.3 lbs
August	FOTM (Lake Trout)	Ray Korducki – 17.5 lbs
	Biggest Fish, Chinook	Jerry Kozar – 22.4 lbs
September	FOTM (King Salmon )	Andy Korducki – 20.9 lbs
	Biggest Fish	None Caught
October	FOTM (King Salmon )	Andy Korducki – 11.72 lbs
	Biggest Fish, Lake Trout	Kevin Kaari – 16.94 lbs

## 2023 GLSF FISHERMAN OF THE YEAR

### Andy Korducky, 85.34 lbs

Brown Trout	22.12
Lake Trout	20.0
Chinook	21.02
Coho	9.0
Rainbow	11.2

### Honorable Mention: Dave Bowe, 68 lbs

## 2023 CAPTAINS CATCH

### Jerry Kozar, 74.12 lbs

Brown Trout	11.6
Lake Trout	19.92
Chinook	22.4
Coho	9.1
Rainbow	11.1

### Honorable Mention: Jay Mathwick, 62.1 lbs





# BoatUS®

BOAT OWNERS ASSOCIATION OF THE UNITED STATES

As a member of [Great Lakes Sport Fishermen](#)  
You can get:

**10% off Water Towing Services,**  
if you upgrade your towing package  
**BOATU.S. COOP GROUP #: GA83624B**

**MEMBERSHIP BENEFITS INCLUDE:**

- 24/7 Dispatch to over 600 towboats in 300+ ports nationwide
- Marine insurance for boaters with 24/7 claims service
- Discounts on fuel, slips, repairs & more at over 1,200 boating businesses nationwide
- Subscription to *BoatU.S. Magazine* (6 issues/year)

Visit [BoatUS.com/Membership](#) to learn about all benefits and services offered to BoatU.S. Members.

MB411 8/17

**Tow Boat USA is now located in Milwaukee!**

<https://www.boatus.com/products-and-services/boat-towing>



**CAYMAS**  
BOATS  
**CRESTLINER**  
FORGED WITH STRENGTH. DEFINED BY DURABILITY.

**AR-CRAFT**  
BOATS

## Big Water Domination

Find yours in our Huge Showroom!



**262-334-7588**  
**3820 Hwy 33 W**  
**West Bend, WI 53095**  
**[www.cedarlakesales.com](http://www.cedarlakesales.com)**

## Membership and 2024 Membership Dues

As of this newsletter, We currently have 99 regular and 43 senior members.

We do need to continue to grow our membership! Unless they notify me, I keep them on the mailing list in hopes they will become motivated to renew their dues. Please take the time to renew when you get the reminder messages. It helps the club and helps support the Lake Michigan Fishery as well. If you have questions, please call Bob at 414-217-9752 or send him an e-mail at [bob@glsfclub.com](mailto:bob@glsfclub.com). You, the membership of this organization, are the life and blood that keep it alive! Please renew when notified. If there is something you would like addressed or changed, please see any board member, or better yet, consider volunteering for a future Board position.

To renew, use the form on the back of the Tightline and send in, or hand in your check or cash at our meetings, pay with a credit card at our meetings, or renew on-line by logging in with your personal login and select the membership option. The website already knows it is you when you are logged in, so all you will need to do is confirm your membership data and input your credit card payment on our secure server connection.

I get notification of all transactions and verify that they are recorded correctly in the membership application to guarantee no errors are committed. When you do your renewal in this manner, 12 months gets automatically added to whatever date your membership was set to expire. This allows us to treat everyone the same. If you joined or renewed in October 2022, you will not see your reminders until September 2023. If you get a reminder that seems too soon to you, please contact Bob ([bob@glsfclub.com](mailto:bob@glsfclub.com)) and let him know so he can investigate. There are a few known bugs in our membership program which we hope will be resolved soon. There have been some inconsistencies with our membership module on our website, so if you believe our data is incorrect, contact me, I can give you your exact expiration date. I do keep a manual spreadsheet to track all memberships. Just send me an e-mail at [bob@glsfclub.com](mailto:bob@glsfclub.com) or text message at 414-217-9752 and I will fix the error.

---

## Now is not the time to drop your GLSF Membership!

Our environment lives on and in some cases needs our support. The good news for us is that our DNR is working, and they can now have face-to-face interactions. This is good news, after almost 2 years of quarantine.

There was an NRB Meeting on October 24-25th. Bob attended the meeting virtually as the only interested Sport Fisherman. The Commercial Fishing Board was on the agenda and the head of the Wisconsin Fisheries, Justine Hasz, did a 15-minute presentation. She told the NRB that next October is the DNR target for starting the process (Scope Statement) to allow Commercial Harvest of Lake Michigan Lake Trout! We need Sport Fishermen to sit up and take notice or we could lose a portion of potential Lake Michigan Sport Fish harvest!

This is a slippery slope as currently Lake Trout are listed as a Wisconsin Game Fish and according to the 2022 Wisconsin Fishing Regulations, Game Fish can only be harvested in Wisconsin by hook and line. How it's allowed on Lake Superior, I do not know, but there is a Lake Trout commercial harvest limit for Lake Superior, as well as a Tribal Harvest Limit. There are some Sport Fishermen who do not like or appreciate Lake Trout and they have been advocating that Commercial Fishing for Lake Trout should be allowed. If it is legally allowed, what happens when they start asking for Coho or Chinook Salmon, Rainbow Trout or Brown Trout? These are species stocked using our Great Lakes Sport Fishing Stamp funds. Without Sport Fishermen support, this is certainly a possibility.

At a recent virtual Wisconsin Conservation Great Lakes Advisory Committee Meeting, Saturday, August 27th, we learned that the recent Whitefish rules and limits for Lower Green Bay were made permanent. Electronic reporting for guides as well as Commercial Harvest has been implemented. This will help the DNR monitor Whitefish harvest throughout the year. Additionally, Trap Net locations now must be reported to the DNR so that people can be made aware of potential navigation issues.

Your membership helps us support and work with the DNR to ensure that stocking of Lake Michigan Salmon and Trout will continue at levels high enough to maintain the current levels of harvest and the current size of the healthy fish being harvested. Please consider renewing and bringing along a friend as a new member, too.





4<sup>th</sup> Ever Milwaukee Great Lakes Sport Fishermen “Thank You” Salmon School

**Saturday, March 30<sup>th</sup>**

**9am to 4:00pm**

**New Berlin Ale House**

16000 W. Cleveland Ave, New Berlin, WI 53151

Seminars conducted by - To Be announced Soon!

**\*\* BUCKET RAFFLES \*\***

**We will have Fishing gear and Limited  
Services available on-site!**

**Advance Registration REQUIRED-**

**Click Here: [https://www.glsfclub.com/GLSF Seminars](https://www.glsfclub.com/GLSF_Seminars)**

**Admission Fee: FREE \* Open to the Public**

**\*(Free Admission ONLY to bidders on GLSF Raffles and all GLSF Members in  
“good standing” Everyone else will be charged \$20 for a GLSF Membership!)**

**Doors Open at 8am**

**Lunch available for purchase with advance registration –  
\$25.00 for a Italian Buffet (Salad, Pasta and Pizza), with a  
cookie**

**Free Coffee and rolls will be available at 8:00**

**There will be a cash bar in the room throughout the day**

**For more information see**

**[www.glsfclub.com](http://www.glsfclub.com) or call Ron @ 262-337-2225, or Bob @414-217-9752**

**See the activities page on website**

**See us on Facebook at**

**Milwaukee Great Lakes Sport Fisherman –**

**Seminar Event**



## Great Lakes Basin Report

## Lake trout season for Lake Superior opened Dec. 1

**BAYFIELD, Wis.** – The Wisconsin DNR reminds anglers that the [Lake Superior's lake trout season](#) is open. The season runs until September 30, 2024 or until the harvest cap is met.

Licenses and stamps can be purchased [online through the Go Wild system](#) or at any [license sales location](#). All regulations apply.

Lake trout are managed in Lake Superior using a quota system with different allocations for different user groups. The Wisconsin waters of Lake Superior are divided into two management units: WI-1, which encompasses all waters from Superior to Bark Point (known as the Western Arm), and WI-2, which includes waters from Bark Point to the Michigan border (known as the Apostle Islands region).

Each of these management units has its own harvest quota based on their respective lake trout populations and typical fishing pressures, and recreational harvest is monitored through sport fishing surveys.

A daily bag limit of three lake trout may be harvested from the Western Arm waters, and only two may be harvested from the Apostle Islands region. In both management units, lake trout must be at least 15 inches long, and only one fish over 25 inches may be kept.

The Apostle Islands region's lake trout quota is generally updated on a 3-year cycle, with the proposed 2024-2026 quota currently in the final stages of the rulemaking process.

As currently proposed, the new quota includes a recreational allocation of 15,000 lake trout, which is about an 18% increase from the current quota. [The Natural Resources Board \(NRB\) will vote on the proposed quota at their meeting on December 13.](#) The public is invited to testify and provide written comments on issues before the board. [Learn more about submitting comments or registering to speak before the NRB on the NRB's webpage.](#) ✧

## Practice Ice Safety on All Waterbodies This Winter

### *Changing temps make ice unpredictable*

**MADISON, Wis.** – The DNR urges the public to practice ice safety on all of Wisconsin's waterbodies and remember that no ice is safe ice.

Frigid overnight temperatures often leave a thin layer of ice across smaller bodies of water, but that ice is not strong enough to support the weight of a person or machine.

"After we have these first cold nights, we start to see the early ice forming. It may look solid to the naked eye, but it's not," said Lt. Jacob Holsclaw, DNR Off-highway Vehicle Administrator. "There can be cracks and changes in the ice thickness that you won't see until it's too late."

Temperature swings, strong winds, currents, underground springs feeding lakes and rivers vary widely across Wisconsin, and even across a given lake or river. These factors and more are why no ice is ever considered safe, especially not this early in the season.

### Get Ice Status from Local Sources

The DNR does not monitor ice conditions. If your plans include access to or use of an ice-covered waterbody, contact your local fishing clubs, bait shops or outfitters for ice conditions.

"These places routinely check ice conditions and can give you the best and most current conditions," said Holsclaw. "If you can plan your outing without any travel over ice, do it. And if you are going to be on some ice, let someone know your plans and follow them."

### Conditions Vary on Waterbodies

Each waterbody can have its own characteristics. Check if the lake has inlets, outlets, narrows that have currents or is spring-fed, all of which can thin the ice. Some smaller lakes can have aerators that are run throughout the winter, either covering a large area towards the center of the lake or may have smaller aerators placed by private property landowners adjacent to their shore and piers.

It is equally as important to stay alert for pressure ridges or ice heaves.

These can be dangerous due to thin ice and resulting open water. They are often created, move or grow with changes in temperatures and high winds. Pressure ridges and ice heaves can happen on Wisconsin's largest lake, Lake Winnebago, a popular home to sturgeon spears, and the Bay of Green Bay.

### Ice Safety Basics

Here are a few basic ice safety tips to remember:

- Carry a charged cell phone, and let people know where you are going and when you'll return home. Leave a written note.
- Wear proper clothing and equipment, including a life jacket or a float coat, to help you stay afloat and to help maintain body heat.
- Wear ice creepers attached to boots to prevent slipping on clear ice.
- Carry a spud bar to check the ice while walking to new areas.
- Carry a few spikes and a length of light rope in an easily accessible pocket to help pull yourself – or others – out of the ice.
- If you fall in, remain as calm as possible. While attempting to get out of the water, call for help. Anyone who attempts to rescue you should use a rope or something similar to avoid falling through themselves.
- Do not travel in unfamiliar areas or at night.

Check out [the DNR's Ice Safety webpage](#) for more information on staying safe on the ice, including tips for creating ice claws and what to do if you fall through ice. ✧





**December Holiday Trivia – Answers on page 14 (No Peeking!)**

1. Which country started the tradition of putting up a Christmas tree?
2. How many gifts in total were given in "The Twelve Days of Christmas" song?
3. What is the best-selling Christmas song ever?
4. What was the first company that used Santa Claus in advertising?
5. Who wrote, "Christmas doesn't come from a store, maybe Christmas perhaps means a little bit more?"
6. What was the highest-grossing Christmas movie of all time?
7. Which country did eggnog come from?
8. How many ghosts show up in A Christmas Carol?
9. Which real-life person is Santa Claus based on?





WISCONSIN  
DEPARTMENT OF  
NATURAL RESOURCES



## FISH STOCKING

### FISHING WISCONSIN

While the vast majority of Wisconsin lakes and streams have self-sustaining fish populations, stocking remains an important management tool for some waters. DNR fish hatcheries and other facilities produce young fish for stocking to re-establish formerly self-sustaining populations, provide research data on the effectiveness of stocking and other related practices, and expand fishing opportunities for Wisconsin's anglers.

### FISH STOCKING DATABASE

The [stocking database](#) allows you to quickly see where fish have been stocked by DNR facilities throughout Wisconsin in past years in case you are interested in targeting stocked waters. You'll find information from 1972 to the present. These reports do not include stocking events performed by private fish hatcheries or tribes.

### STOCKING FREQUENTLY ASKED QUESTIONS

#### Why are fish stocked into some lakes and streams?

Stocking is used as part of an integrated management approach:

**Rehabilitation:** To restore self-sustaining fish populations.

**Research or Evaluation:** To determine the cost-effectiveness of stocking, evaluate alternate propagation techniques, or other management actions.

**Remediation:** To maintain an existing fishery that has been reduced due to external impacts, such as habitat losses or winter kills.

**Recreation:** To create or maintain a recreational fishery that did not previously exist and is not self-sustaining.

**Introductions:** To introduce a species into a waterbody was not previously present, ideally resulting in the establishment of a self-sustaining fishery with minimal impacts on existing fisheries.

#### What species of fish are stocked in Wisconsin waters?

The species of fish stocked in Wisconsin include brook trout, brown trout, rainbow trout, lake trout, coho salmon, chinook salmon, steelhead, largemouth bass, smallmouth bass, lake sturgeon, muskellunge, northern pike, and walleye.

#### How many fish get stocked into each waterbody?

The number and size of fish stocked are based on the size of the waterbody and the management goal for that waterbody. Fish managers consider many factors, including growth rate, mortality, habitat, and the amount of natural reproduction when determining the number and size of fish to be stocked.

#### What do I need if I want to stock fish in Wisconsin?

To stock fish in Wisconsin, you can either

- fill out a general permit for the stocking of private ponds or
- submit a [Form 9400-060 - Fish Stocking Permit Application \[PDF\]](#) to the Wisconsin DNR fish biologist who manages the waters where you wish to stock the fish.



# TRAP SHOOTING on Tuesday Evenings

At Schultz Gun Club Every Tuesday Evening, Weather Permitting

**This Event is OPEN to ALL!**



Whether you're at a Beginner,  
Intermediate, or at an Advanced Level,  
Everyone is Welcome!

**Time: 5:00PM to 8PM**

**Cost: \$7.00 per Round**

**Bring Your Shotgun and Shell's**



We ask that you please bring cash in \$7 dollar increments for the number of rounds you wish to shoot, (i.e., \$7, \$14, \$21, etc.) Sorry, cash only.

Beginners and/or Handicapped are most welcome and encouraged to attend. Even if you've never shot trap before, we will take the time to teach and help you learn the basics. This is a casual event with no pressure or hurry. There are no trap leagues on Tuesday evenings so just relax; enjoy this sport and have fun! When finished, feel free to socialize with your fellow trap shooters over a cold beverage, snacks, and pizza in the clubhouse!

## Trap Rules



- If you're new to this sport, please bring your gun "cased" to the line and wait for instructions from the Range Safety Officer.
- If you are an experienced trap shooter, bring your shotgun, action open per Club Rules, to the trap area and place your gun in the wooden gun racks.

Check our website if in doubt of the weather, [www.schultzgunclub.com](http://www.schultzgunclub.com)

Where:

**Schultz Resort, Rod & Gun Club  
W146 S8025 Schultz Lane  
Muskego, WI 53150**



Questions? Call Jeff at 414-366-5501

## A Reminder from our Great Lake Fisheries Manager of Southern Lake Michigan – Cheryl Masterson

For all the conscientious Fishermen wanting to help science in a big way for tracking our Lake Michigan Fish, the DNR in conjunction with Sea Grant has deployed an App Called the Great Lakes Angler Diary. The details on the Great Lakes Angler Diary and registration info can be found here –

<https://www.michiganseagrant.org/topics/fisheries-and-aquaculture/angler-citizen-science/great-lakes-angler-diary/>

Your Help is needed and appreciated as a volunteer to accurately fill out this Diary for every Lake Michigan Trip you take! It easy, fast, and free and helps the Sport Fishermen! Think about this for 2023!



**Captain Marc Sobeski**  
**Phone: 414-247-1660**  
**E-Mail: CaptMarc@att.net**

The Waverly II, our 36-foot CustomTiara is fully equipped with the latest Raytheon

state of the art electronics. This fully integrated system includes GPS chartplotter, HD Digital fishfinder, radar, autopilot, and more!



## *Screamin' Drags Tackle Co.*

Sussex, WI





---

**2023**

**OFFICIAL SPONSOR OF**  
*Brew City 23rd Annual Salmon Tournament*  
*July 29*

---



**Great Lakes Dealer**



**Locations-**

**1001 Michigan Blvd, Racine, WI 53402 (414) 651-3100**

**1333 Madison St Building A Unit 62 Grand Haven, MI 49417 (616) 842-8899**

**11840 Toledo Beach Rd La Salle, MI 48145 (734) 821-5013**

**[www.reedyachtsales.com](http://www.reedyachtsales.com)**

### Trivia Answers – (Continued from page 9)

1. Germany
2. 364
3. "White Christmas" by Bing Crosby
4. Coca-Cola
5. Dr. Seuss
6. Home Alone
7. England
8. Four
9. The Christian bishop St. Nicholas



### Great Lakes Basin Report

## Scientists turn invasive carp into traitors to slow their Great Lakes push

Wildlife officials across the Great Lakes are looking for spies to take on an almost impossible mission: stop the spread of invasive carp. Over the last five years, agencies such as the U.S. Fish and Wildlife Service and Minnesota DNR have employed a new seek-and-destroy strategy that uses turncoat carp to lead them to the fish's hotspot hideouts.

Agency workers turn carp into double agents by capturing them, implanting transmitters and tossing them back. Floating receivers send real-time notifications when a tagged carp swims past. Carp often clump in schools in the spring and fall. Armed with the traitor carp's location, agency workers and commercial anglers can

head to that spot, drop their nets and remove multiple fish from the ecosystem. *(The system works! See page 3)*

Kayla Stampfle, invasive carp field lead for the Minnesota DNR, said the goal is to monitor when carp start moving in the spring and use the tagged fish to ambush their brethren.

"We use these fish as a traitor fish and set the nets around this fish," she said.

[Four different species](#) are considered invasive carp: bighead, black, grass and silver. They were imported to the U.S. in the 1960s and 1970s to help rid southern aquaculture farms of algae, weeds and parasites. But they escaped Mississippi River and have used it as a super highway to spread north into rivers and streams in the nation's midsection.



**Minnesota DNR Invasive Carp Field Lead Kayla Stampfle inspects the components of a telemetry receiver that tracks tagged invasive carp in the Mississippi River near La Crosse. The solar-powered receiver can transmit real-time notifications of the movements of tagged invasive carp.**



printgraphix

**LOWEST COPY PRICES  
IN THE AREA!**

500 b/w copies \$20; 500 color copies \$70  
1000 b/w copies \$35; 1000 color copies \$99  
Prices based on 8-1/2 x 11 -20# white paper, 1 side

4967 S. 76th Street, Greenfield, WI  
(414)281-9545 • Fax: (414)281-9501

[email: printgraphix@aol.com](mailto:printgraphix@aol.com)

M-F 8:30 am • 8pm; Sat 10am • 5pm

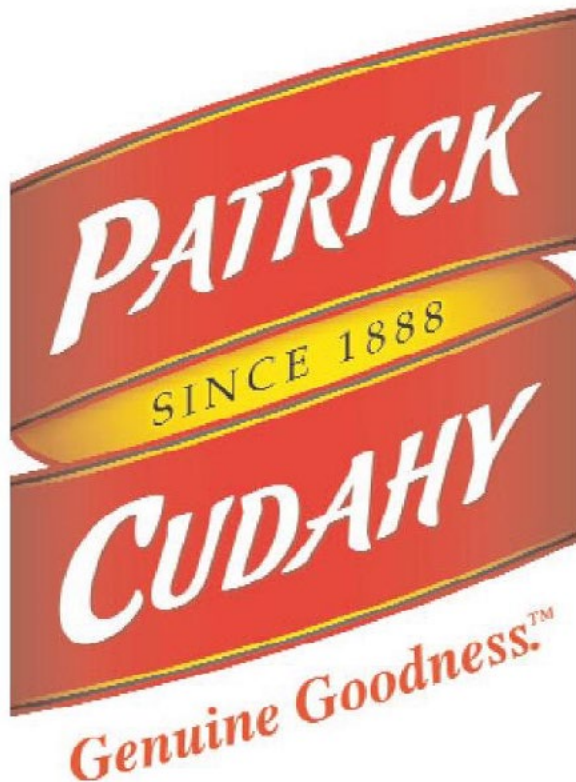
**Sanger Law Office, S.C.**

**85th &  
Forest Home**

**FREE INITIAL  
CONSULTATION**

- PROBATE/TRUST ADMINISTRATION
- PROBATE AVOIDANCE
- WILLS & TRUSTS
- POWERS OF ATTORNEY
- HOME OR HOSPITAL VISITS
- REAL ESTATE
  - o OFFERS
  - o CLOSINGS

**MICHAEL D. SANGER** (414) 304-6000  
8585 W. Forest Home Ave., Greenfield, WI 53228  
[www.michaelsangerlaw.com](http://www.michaelsangerlaw.com)





All leaders are hand-tied  
w/50lb Trilene Big Game Mono

Custom Flies are available.  
If you want it I can make it.



If you're serious about pounding Salmon

Available at R&R Sports Fishing Hole, Dick Smith's Live Bait & Tackle.



11901 W. Janesville Rd. • Hales Corners, WI 53130  
MWMARINE.COM • (414) 425-2790





## 2024 Sponsors of the GLSF

(Please support our sponsors)

### Titanium Sponsors:

Reed Yacht Sales	<a href="http://www.reedyatchsales.com">www.reedyatchsales.com</a>	(414) 651-3100
Weldcraft	<a href="https://weldcraftmarine.com/">https://weldcraftmarine.com/</a>	
Cedar Lake Sales	<a href="https://www.cedarlakesales.com/">https://www.cedarlakesales.com/</a> 3820 Hwy 33 W, West Bend, WI	(262) 334-7588
Hammerflies	<a href="https://hammerflies.com/">https://hammerflies.com/</a>	(414) 426-7536
Phoenix Roofing	<a href="http://www.phoenixRoofingWI.com">www.phoenixRoofingWI.com</a>	(262) 844-6838
R&R Fishin' Hole	<a href="https://www.rrsportsfishinhole.com/">https://www.rrsportsfishinhole.com/</a> 3070 East Layton Avenue, St. Francis, WI 53235	(414) 481-6888 Fishing Hotline: (414) 481-9090

### Platinum Sponsors:

Fire Flies	<a href="http://www.facebook.com/fireflieswi/">www.facebook.com/fireflieswi/</a>	
Grizzly Charters	<a href="https://Facebook.com/GrizzlyCharters">Facebook.com/GrizzlyCharters</a>	(262) 470-0021
Local Roofing Solutions	<a href="http://www.localroofingsolutions.com/">www.localroofingsolutions.com/</a>	(414) 477-1982
M-W Marine, Inc.	<a href="https://www.mwmarine.com/">https://www.mwmarine.com/</a> 11901 W. Janesville Rd. Hales Corners, WI	(414) 425-2790
Manhardt Charters	<a href="https://Facebook/Manhardtcharters">Facebook/Manhardtcharters</a>	(262) 719-1475
Maritime Charters	<a href="https://maritimecharters.com/">https://maritimecharters.com/</a>	(414) 247-1660
Patrick Cudahy	1 Sweet Apple-Wood Lane, Cudahy, WI 53110	(414) 744-2000
Screaming Drags	<a href="https://www.facebook.com/ScreaminDragsTackle/">https://www.facebook.com/ScreaminDragsTackle/</a>	(262) 307-9167
Silver King Charters	2942 S Pine Ave, Bay View, WI 53207	(414) 460-1467

### Gold Sponsors:

B.S. Wisniewski	4847 W. Forest Home Ave	
Sanger Law Offices	8585 W. Forest Home Ave. Greenfield, WI 53228	(414) 304-6000

### Silver Sponsors:

Cardinal Print Group	206 Travis Ln. Ste 8. Waukesha, WI 53189	(262) 522-1101
Milwaukee Offshore Fishing	<a href="http://milwaukeeoffshorefishing.com">milwaukeeoffshorefishing.com</a>	(414) 617-9331
Print Graphix	4749 S 76 Street, Greenfield, WI 53220	(414) 281-9545
Sid Grinker Restoration	1719 N Vel R Phillips Ave, Milwaukee, WI	(414) 687-2043

## Fee Structure

- Silver** – Includes one Standard Membership for the named individual, plus a one line listing in The Tightline, the GLSF website's Sponsor's Page (with a link to your website, if desired) and the GLSF Members' Handbook. (NO Logos or ads will be listed for this price) (\$100)
- Gold** – Same benefits as the Silver Membership, plus a small (Business Card size) ad someplace in The Tightline and the GLSF website. (\$200)
- Platinum** – Same Benefits as the Gold Membership, plus a quarter page ad in The Tightline and the equivalent sized ad on the GLSF website. (\$500)
- Titanium** - Is the highest level of participation of an Associate, and is bestowed upon the company, or individual, by the GLSF Board of Directors, and is reserved for Associates that contribute \$1000 or more. This would include all of the benefits of the Platinum membership plus, the ad size would be increased to at least a half page or more, at the discretion of the Executive Board, for greater donations. (\$1000+)



# Milwaukee River remediation project



Thank you for your support and cooperation!

In 2016, We Energies agreed to join local, state and federal partners to take steps to improve the Milwaukee Estuary. Soon after, we reached out to you — our valued community members — about an ambitious project to clean up a vital part of the Milwaukee River. Thanks to you and your engagement, a stretch of the Milwaukee River adjacent to the Historic Third Ward is now safer and cleaner following the recent completion of the remediation project.

Contamination within the Milwaukee Estuary Area of Concern (AOC) is a result of decades of historical industry in the area. The We Energies Milwaukee River remediation project addressed contamination from a former manufactured gas plant that once operated in the area. Impacted river sediment within a 0.6-mile stretch of the Milwaukee River was addressed during this yearlong project. The ultimate goal: to improve water quality for public health, recreation, and fish and wildlife habitat in the Milwaukee River - and throughout the Milwaukee Estuary. Completion of our project this year sets the greater Milwaukee region on that path.

*“Revitalizing our rivers, like our neighborhoods, is a team effort. The We Energies Third Ward Milwaukee River remediation project proves that persistence and partnerships among our civic organizations, businesses, agencies and stakeholders is the pathway to success.”*

*Jim Plaisted, Executive Director,  
Historic Third Ward Association*





## Positive results

In partnership with the U.S. Environmental Protection Agency, Wisconsin Department of Natural Resources, City of Milwaukee, Port Milwaukee, Waterway Restoration Partnership and the community, the We Energies Milwaukee River remediation project, completed in September 2023, has resulted in:

- Approximately 44,000 cubic yards of impacted sediment remediated.
- More than 105 million gallons of water treated.
- Approximately 17,000 cubic yards of engineered, clean river bottom cover installed.
- Approximately 1,200 linear feet of new steel walls built for bulkhead wall stability.
- Dozens of stakeholder meetings and conversations to keep the community informed.
- A staff of 30 to 40 individuals working onsite up to 12 hours a day, six days a week, contributing jobs and revenue to the local economy.
- Zero safety incidents in more than 60,000 hours worked.
- An anticipated \$35 million-plus in federal funds unlocked to contribute to additional Milwaukee Estuary AOC cleanup in the coming years.





## What happens now that remediation in this area is complete?

We Energies will monitor the integrity of the remediation area's newly placed engineered cap on the river bottom to verify that it functions as intended.

A variety of partners will continue the work to restore the broader Milwaukee Estuary AOC in the coming years. Central to Milwaukee Estuary AOC progress is the Waterway Restoration Partnership, a robust group of long-standing, trusted partners in the community that have been working together for years to improve water quality in the area.

With a once-in-a-generation opportunity on the horizon, these organizations have formalized their partnership and strengthened their commitment to work together to restore our waterways so the Milwaukee Estuary AOC can be taken off the federal cleanup list and the waterways enjoyed to their fullest extent.

Stay updated and get involved through the Waterway Restoration Partnership at [mkewaterwaypartners.org](https://mkewaterwaypartners.org)

### Milwaukee Estuary Area of Concern (AOC)

An AOC is an area on the Great Lakes that has significant environmental degradation, preventing people and wildlife from fully using or enjoying the local waterways.

The Milwaukee Estuary AOC includes the three major rivers in Milwaukee — Milwaukee, Menomonee and Kinnickinnic — and Lake Michigan. Portions of the Milwaukee Estuary became an AOC in 1987 because of historical contamination that endangered fish consumption, water quality and wildlife habitat.

More on AOCs can be found at [www.epa.gov/great-lakes-aocs](https://www.epa.gov/great-lakes-aocs).



*“The completion of the Third Ward Milwaukee River project will help build momentum so that restoring the entire Milwaukee Estuary AOC is closer to becoming a reality.”*

*Cheryl Nenn,  
Milwaukee Riverkeeper*





*Thank you so much for the tree that you planted for John. Your kindness is very thoughtful. He would of liked it too. He loved the outdoors and all that it entailed.*

*Thanks again,  
Lynn Swindewicz*

*Many, many thanks!  
Your thoughtfulness  
was very special.*



## Hunters and Anglers Step Up Big Time for Conservation

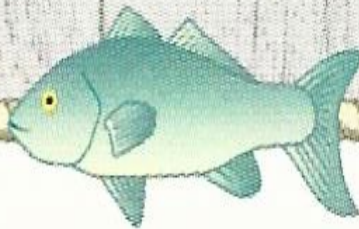
A record amount of \$1.09 billion dollars is being distributed to the states for conservation purposes through the Federal Pittman-Robertson and Dingell-Johnson programs. Under those programs, sportsmen and women pay 11% excise taxes on firearms, ammunition and fishing equipment. Wisconsin will be receiving \$32.4 million this year, \$19.6 million for wildlife restoration and \$12.8 for fish restoration efforts. That is a 10% increase in funding over the previous year. For additional information on the funds and their use. [Click Here for more....](#)

## Current Dates for 2024 SW Lake Michigan Tournaments

Tournament	Port	Date
SU WI Open	Racine	TBD
Kenosha Classic	Kenosha	TBD
SU IL Pass the Passion	Northpoint	TBD
Salmon a Rama	Racine	TBD
Super Sweepstakes	Racine	TBD
Two in a Boat	Racine	TBD
<b>Brew City</b>		
<b>Powder Puff – Warm Up</b>	<b>Milwaukee</b>	<b>TBD</b>
<b>Pro Division</b>	<b>Milwaukee</b>	<b>August 3rd</b>
<b>Brew City Pro/Am</b>	<b>Milwaukee</b>	<b>August 3rd</b>
SU IL Open	Northpoint	TBD

# R & R Sports Fishin' Hole

[www.rrsportsfishinhole.com](http://www.rrsportsfishinhole.com)



## Roger Stack

Operation Manager

3070 East Layton Avenue  
St. Francis, WI 53235

Store: (414) 481-6888  
Fishing Hotline: (414) 481-9090



Reviving homes  
one roof at a time

**262-844-6838**

[www.phoenixRoofingWI.com](http://www.phoenixRoofingWI.com)

Lifetime warranty with every full roof  
replacement, over 20 years experience.

Follow us on Facebook!

facebook



**Milwaukee Great Lakes Sport  
Fishermen**

@glsfclub · Nonprofit organization





**Yar-Craft**  
Experience the Day Out



**Cedar Lake Sales**


3820 Hwy 33 W \* West Bend  
262-334-7588

[www.cedarlakesales.com](http://www.cedarlakesales.com)

Fish/Ski \* Pontoons \* Piers/Lifts  
Award Winning Service



**CRESTLINER**



**Silver King**  
CHARTERS  
MKE WI.

**“The Best Charter Fishing Value in Milwaukee”**

BOOK A MILWAUKEE CHARTER FISHING TRIP on LAKE MICHIGAN NOW!

Call 414-460-1467  
<http://www.silverkingfishon.com>



**Local Roofing Solutions**

Oconomowoc, WI

Contact us at (414) 477-1982  
[www.localroofingsolutions.com/](http://www.localroofingsolutions.com/)



**Fire Flies**  
Premium Trolling Flies

[www.FireFliesWI.com](http://www.FireFliesWI.com)

If you are interested in going as a group, Bob is planning on getting at least 1, if not 2 tables of 8 people. Call or text Bob for details - 414-217-9752. It will be 60 per person so he can make the reservations. You can order your raffle tickets in advance to receive a discount, too!

## Waukesha County Conservation Alliance Banquet & Raffles

Friday, February 2, 2024 Doors open 5:30 PM. Dinner at 7:00 PM.

Delafield Brewhaus, 3832 Hillside Dr., Delafield, WI 53018

### Raffles & Wingspans for: 19 firearms, Outdoor Gear and more!

Order Dinner & Raffle Tickets for pick-up at the door.  
Dinner Tickets - \$60 each. Reserve a table of 8 for \$450

*Seating is Limited*

#### Advance Sale Raffle Ticket Packs:

50 raffle tickets *plus* 1 bonus gun raffle ticket for \$175 (\$200 at the door)  
or 20 tickets for \$100 or 8 tickets for \$50

**Early Bird Entry by Jan. 13, 2024**

One winner will receive 50 raffle tickets

**Special Group Package!** Reserved table with 8 dinner tickets & 80 raffle tickets  
*plus* 1 bonus gun raffle ticket for \$725

**Mail the Order Form Below To:** WCCA Banquet, c/o Al Shook  
W339S2576 Hwy C, Oconomowoc, WI 53036  
Questions? Call Al at 262-968-2598, leave a message

#### Dinner & Raffle Ticket Orders

**Must be received by Jan. 20, 2024**

**Special Group Packages** \_\_\_ x \$725 = \$ \_\_\_\_\_

Table Captain or Group Names for tables:

\_\_\_\_\_  
\_\_\_\_\_

#### Banquet Dinner Tickets:

Individual Tickets: \_\_\_ x \$60 = \$ \_\_\_\_\_

Table with 8 Tickets: \_\_\_ x \$450 = \$ \_\_\_\_\_

Table Captain or Group Names for tables of 8:

\_\_\_\_\_  
\_\_\_\_\_

#### Raffle Ticket Packs:

50+1 for \$175: \_\_\_ packs x \$175 = \$ \_\_\_\_\_

20 for \$100: \_\_\_ packs x \$100 = \$ \_\_\_\_\_

8 for \$50: \_\_\_ packs x \$50 = \$ \_\_\_\_\_

**TOTAL Purchase:** \$ \_\_\_\_\_

Name: \_\_\_\_\_

Street: \_\_\_\_\_

City: \_\_\_\_\_

State: \_\_\_\_\_ Zip: \_\_\_\_\_

Phone: ( ) \_\_\_\_\_ - \_\_\_\_\_

E-mail: \_\_\_\_\_

#### Payment Options

☒ Enclose a Check payable to: WCCA

☒ Charge my: ☐ VISA ☐ Mastercard

☐ Discover ☐ Am. Express

Card # \_\_\_\_\_

Expires : \_\_\_\_\_ Security Code \_\_\_\_\_

Name on card: \_\_\_\_\_

Card holder's signature: \_\_\_\_\_

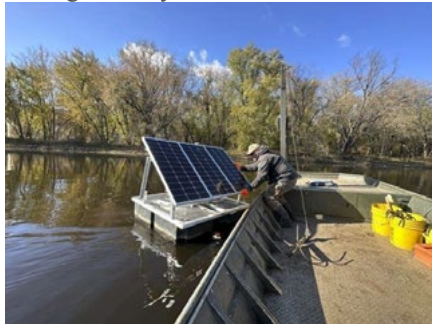


## Invasive carp traitors

The carp are [voracious eaters](#)—adult bigheads and silvers can consume up to 40% of their bodyweight in a day—and easily out-compete native species, wreaking havoc on aquatic ecosystems. There is no hard estimates of invasive carp populations in the U.S. but they are believed to number in the millions.

State and federal agencies have spent a combined \$607 million to stop the fish, [according to figures The Associated Press compiled](#) in 2020. Spending is expected to hit \$1.5 billion over the next decade.

But wildlife and fisheries experts say it would be nearly impossible to eradicate invasive carp in the U.S. Just keeping them out of the Great Lakes and protecting the region's \$7 billion fishing industry would be a success.



**MN DNR Technician James Stone works to remove a floating solar-powered telemetry receiver from the Mississippi River near La Crosse.**

Fisheries experts have employed a [host of defenses](#), including electric barriers, walls of bubbles and herding the carp into nets using underwater speakers. But the fish still have made their way up the Mississippi as far as northern Wisconsin and [grass carp have been found in Lake Erie, Lake Michigan and Lake Ontario](#), leaving fisheries managers racing to blunt the incursion.

Agencies such as the U.S. Fish and Wildlife Service and state wildlife managers have built a network of receivers extending from the St. Croix River in far northern Wisconsin to the Gulf of Mexico to record tagged invasive carp's movement, with

periodic data collection. The first receivers were deployed in the Illinois River in an effort to stem migration into Lake Michigan in the early 2000s.

Beginning around 2018, managers started placing new, solar-powered receivers around the Great Lakes region that could track tagged carp and send instant notifications to observers. The real-time notifications reveal where carp may be massing before a migration and illuminate movement patterns, allowing the agencies to plan round-up expeditions to remove carp from the environment and tag more traitor fish.

The receivers are essentially a raft supporting three solar panels and a locked box with a modem and a computer that records contacts with tagged carp. The receivers can pick up signals from tagged fish over a mile away, Fritts said.

He estimated each receiver costs about \$10,000. The federal [Water Resources Reform and Development Act of 2014](#) authorized a multi-agency offensive against invasive carp in the upper Mississippi River and Ohio River basins, allowing the USFWS to spend on the devices through its existing budget.

Agencies have deployed the devices in Lake Erie, a stretch of the Mississippi between the Illinois and Missouri borders, the Illinois River and Chicago-area riverways, Fritts said.

The USFWS has set up four real-time receivers in the Mississippi backwaters extending from Davenport, Iowa, to the Missouri border. [The U.S. Geologic Survey has set up more than a dozen devices](#), including receivers in the Chicago Sanitary and Ship Canal, the Des Plaines and Illinois rivers in Illinois; and the Sandusky River in Ohio.

The Minnesota DNR began deploying real-time receivers in the Mississippi backwaters forming the Minnesota-Wisconsin border around La Crosse three years ago. The agency had four receivers out this year, funded largely through federal grants. Plans call for

seven next year. Wildlife agencies are still consolidating data on how many invasive carp that real-time tracking has helped them remove, U.S. Fish and Wildlife fisheries spokesperson Janet Lebson said.

But they say the traitor fish tactic is worthwhile, pointing to results in the Mississippi from the Illinois-Iowa Quad Cities to the Iowa-Missouri border. Real-time tracking there has helped wildlife managers and anglers as much as double the poundage of invasive carp pulled from that area of river annually, said Mark Fritts, a fish biologist and telemetry expert in the USFWS's La Crosse office.

The strategy has drawn muted criticism from the fisheries industry because managers return tagged invasive carp to the wild where they can breed, said Marc Smith, policy director at the National Wildlife Federation's Great Lakes Regional Center. But wildlife agencies need every weapon they can get against the carp, he said.

"In theory, it works," Smith said. "We think the rewards outweigh the risk. We have to throw everything we can at them. I wouldn't want to take anything off the table." Stampfle and fish technician James Stone spent three hours in the Mississippi and Black rivers backwaters around La Crosse on a recent November day removing the receivers for the winter. She said the work is worth it.

"When are these fish moving? If we can figure that out, it gives us a fighting chance," Stampfle said as she guided her flat-bottom boat back to the landing. "Can we keep up with them? I don't think anyone can answer that accurately. It's still unknown territory. It's an uphill battle on a very slick slope. You just pray you have a foothold."

**(See related article "[Minnesota and Wisconsin DNRs partner to capture 323 invasive carp on page 3](#)") ♦**

## Minnesota and Wisconsin DNRs partner to capture 323 invasive carp

### *Largest single capture in Minnesota/Wisconsin waters*

The Minnesota DNR has confirmed the capture of 323 invasive carp on Thursday, Nov. 30 in Pool 6 of the Mississippi River, near Trempealeau, Wisconsin. Species captured were 296 silver carp, 23 grass carp, and 4 bighead carp. This is the largest single capture of invasive carp that has occurred in Minnesota to date. The capture was made possible by tracking tagged invasive carp, which led agency staff and contracted commercial fishers to them for removal.

“Tagging and tracking of invasive carp by the DNR and its partners is working and leading to the successful removal of fish in Minnesota,” DNR Invasive Carp Coordinator Grace Loppnow said. “Wisconsin DNR crews located six tagged invasive carp in Pool 6 last week. Those detections, along with observations by our contracted commercial fisher, led to the successful removal of these invasive carp.”

DNR crews will follow up with additional netting at this location over the next week. The Minnesota DNR and partners will continue to track and capture invasive carp yet this year for as long as river conditions allow. DNR and the U.S. Fish and Wildlife Service will also be examining the fish captured this week to evaluate age, reproductive condition, and information about the origin of these fish.

“While it is certainly concerning that we have captured this large number of invasive carp in Pool 6, it is likely that these adult fish moved upstream from other locations and were not the result of reproduction in Minnesota waters. DNR will continue to evaluate the data and work with its partners to learn everything we can, while we also work to remove additional fish,” said Loppnow.

Increased reports of invasive carp and data from tagged fish indicate that fish were moving in the Mississippi River in spring 2023 during the

extended springtime flooding. It is likely that the high-water conditions allowed invasive carp and other fish to move upstream past open dams. Invasive carp tend to congregate in the spring and fall and all the previous large captures have happened in these seasons. The previous largest capture of invasive carp was 51 in spring 2020, in similar conditions after an extended period of flooding in 2019.

#### ***Additional Invasive Carp Management Efforts***

The DNR and U.S. Geological Survey (USGS) have been testing new invasive carp capture techniques for use in Minnesota waters. Six invasive carp—five silver carp and one grass carp—were captured and tagged during a five-day operation in October in Pools 6 and 8 of the Mississippi River.

Three new technologies developed by USGS were successfully deployed during the October operation:

- Floating gill nets that entangle jumping carp
- Speakers attached to a buoy to help direct invasive carp movement through sound
- Remotely operated kayaks that can be used for surveys and herding fish

The new technologies are being tested and adapted now for more extensive use. The DNR and many partner agencies and organizations have been testing and implementing a wide range of invasive carp prevention technologies and methods for more than a decade.

The DNR is using a wide range of efforts to manage invasive carp, including tagging and tracking invasive carp to better understand and exploit their movements, contracting with commercial fishing operations to target invasive carp, and developing and testing new methods to capture invasive carp. To date, no evidence of

invasive carp reproduction has been observed in Minnesota waters. For additional information please visit [Invasive Carp | Minnesota DNR \(state.mn.us\)](https://invasivcarp.mn.us)

The agency is also working closely with stakeholders to evaluate potential management options in the Mississippi River. This includes consideration of a carp barrier project at Lock and Dam 5, near Whitman, Minnesota. The DNR expects to have recommendations for actions available by the end of 2023 and those results will inform an update of the [Minnesota Invasive Carp Action Plan](https://invasivcarp.mn.us).

#### ***Additional Background on Invasive Carp in Minnesota***

Invasive carp have been moving upstream since escaping into the Mississippi River in Arkansas in the 1970s. These fish compete with native species and silver carp can jump out of the water, posing a risk to boaters. Individual invasive carp have been caught as far upstream as Pool 2 of the Mississippi River in the Twin Cities metro area (bighead, grass and silver), the King Power Plant on the St. Croix River by Oak Park Heights (bighead and silver), and just downstream of Granite Falls in the Minnesota River (bighead).

State and federal funding sources, including the Environmental and Natural Resources Trust Fund and Outdoor Heritage Fund, have provided key funding for the DNR invasive carp detection and response program. Invasive carp captures in Minnesota must be reported to the DNR immediately by calling 651-587-2781 or emailing [invasivcarp.dnr@state.mn.us](mailto:invasivcarp.dnr@state.mn.us). People are asked to take a photo and transport the carp to the nearest DNR fisheries office or make arrangements for it to be picked up by a DNR official. A [permit can be requested](#) to keep captured invasive carp for consumption or disposal.

More information about invasive carp is available on the [DNR website](https://invasivcarp.mn.us)  
✧



## Great Lakes Habitat Restoration: Partnering to Promote Fish Production

*New Regional Habitat Partnership between the Great Lakes Fishery Commission and National Oceanic and Atmospheric Administration will support fish habitat restoration priorities in the Great Lakes.*

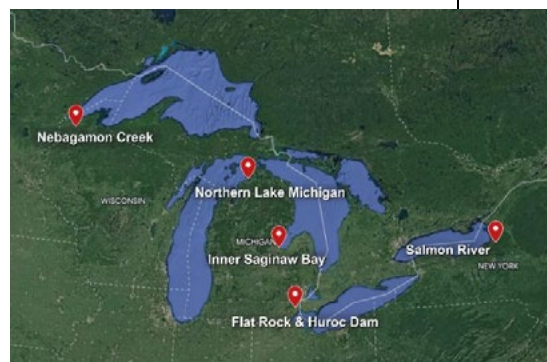
Degradation of coastal, nearshore, and riverine habitats has adversely affected fish communities and fisheries in the Great Lakes for more than a century. Now a partnership between the National Oceanic and Atmospheric Administration (NOAA) and the Great Lakes Fishery Commission (Commission) is advancing restoration goals for important habitat for Great Lakes fish. Working with NOAA Fisheries through a Regional Habitat Partnership funded at \$4.8 million by NOAA, the Commission, along with local partners, is leading implementation of high priority projects as identified by [Lake Committees](#) across the Great Lakes.

The Lake Committees, which include representation by senior officials from state, provincial, and U.S. intertribal fishery agencies, conducted an extensive process to identify habitat constraints on native fish production and to prioritize restoration efforts during the next decade in each of the Great Lakes. High-quality connected habitats are important for sustained fish production—by protecting and improving habitat, fish communities and their associated fisheries can directly benefit. Fish habitat improvement techniques range from regional-scale actions that impact water quality and sediment erosion, to local actions that improve connectivity (e.g., dam removal) or restore open-lake physical habitat (e.g., reef construction). Selecting appropriate strategies and locations for habitat protection and improvement is critical. So, the development of priorities is an important step for progress toward protecting and improving fish habitat.

### Prioritization Process

The prioritization process conducted by the Lake Committees yielded a set of priority projects in each Great Lake. A subset of six of the priority projects—ranging from shovel-ready to conceptual—was included as part of the regional partnership. All six

projects will directly contribute to fish production in areas identified by the Lake Committees as priorities. The six projects span the breadth of the Great Lakes with at least one project in each Great Lake, and will benefit a variety of fish species such as state-listed species (lake sturgeon) and targeted species in formal restoration plans (walleye, brook trout, Atlantic salmon, cisco, lake trout). Impairments addressed in these projects include degraded reef substrates, hydrologic barriers in tributaries, excessive in-stream bank erosion, and lack of productive capacity. The projects include four projects being addressed in the first wave of activity (detailed below) and two additional projects which will move forward in a second wave.



**Map of the six project sites selected during the process. The Salmon River site includes two projects.**

### Additional Priority Projects Soon to be Addressed

In addition to the four ongoing projects highlighted above, two additional projects are planned for the future. The first is reef restoration in northern Lake Michigan (near Charlevoix, Michigan – exact location to be determined). This project will identify restoration locations and guide restoration actions for reef rehabilitation in northern Lake Michigan, improving habitat for lake whitefish, lake trout, and cisco. The second is additional in-stream habitat restoration in the Salmon River, Lake

Ontario (Oswego County, New York). This project will focus on restoration of natural erosion and sedimentation processes, and reconnection to the floodplain, in two reaches directly downstream of the Trestle Pool site to improve habitats for Atlantic salmon and other native species.

### Strengthening Great Lakes Fisheries, Ecosystems, and Communities

The Great Lakes and St. Lawrence River basin include more than 10,000 miles of coastline that are home to more than 3,500 plant and animal species, some of which are found nowhere else on Earth. Yet, extensive human activity for more than a century has led to the loss of habitat for fish, negatively impacting fish production

and fisheries in addition to other negative impacts on the region's rich and diverse ecosystems.

The new Regional Habitat Partnership between NOAA and the Commission is working to address critical habitat needs in priority areas of the Great Lakes, thereby contributing to healthy Great Lakes ecosystems and fisheries.

"NOAA is proud to partner with the Great Lakes Fishery Commission on these important efforts to restore habitat and bring benefits to Great Lakes fisheries and communities," said Carrie Selberg Robinson, director of the NOAA Fisheries Office of Habitat Conservation.

"Habitat restoration efforts enacted through the partnership will further the Strategic Vision of the Commission and missions of project partners by restoring healthy Great Lakes ecosystems and sustainable fisheries and through the development of strategic alliances and partnerships," said James McKane, the Commission's chair.

For more info: <http://www.glfrc.org/pulse-on-science.php> ☆

## G L S F Membership Form

Name \_\_\_\_\_

Address 1 \_\_\_\_\_

Address 2 \_\_\_\_\_

City \_\_\_\_\_

State \_\_\_\_\_ Zip \_\_\_\_\_

Name of Boat \_\_\_\_\_

Home Phone \_\_\_\_\_

Cell Phone \_\_\_\_\_

Company Name \_\_\_\_\_

Web Site URL \_\_\_\_\_

Email Address \_\_\_\_\_

Spouse's Name \_\_\_\_\_

Number of people in the household \_\_\_\_\_

- ☐ New Membership
- ☐ Renewal Membership
- ☐ Change of Address

Please fill-in all  
boxes that apply.

- ☐ ALL MEMBERSHIPS.....\$20.00
- \_\_\_\_\_ Family Membership
- \_\_\_\_\_ Junior Membership
- \_\_\_\_\_ Senior Membership
- ☐ Associate (Silver Level).....\$100.00
- ☐ Associate (Gold Level).....\$200.00
- ☐ Associate (Platinum Level).....\$500.00
- ☐ Associate (Titanium Level).....\$1000.00

Charter Captain ☐ Yes or ☐ No

If Paying by MasterCard or Visa:

Expiration Date:\_\_\_\_\_ Security Code:\_\_\_\_\_

Make Checks payable to: Great Lakes Sport Fishermen - Mail to PO Box 510332, New Berlin WI, 53151-0332

